

TAPELESS MAINFRAME SOLUTIONS

Luminex's Channel Gateway and HP Enterprise Storage – High Performance Virtual Tape with up to 8Gb/s FICON Connectivity

MODERN Mainframe Virtual Tape solutions from Luminex with HP Enterprise Storage allow mainframe data centers to eliminate or reduce physical tape while improving all aspects of tape operations, including batch processing, HSM/archiving, and backup and recovery. There is no higher performing solution available on the planet.

Physical tape continues to demand more resources and maintenance costs from mainframe data centers. Floor space and energy requirements, repeated operator interventions, end-of-life support, off-site shipping, lost and failed tapes all converge to challenge already constrained IT resources, budgets and business critical disaster recovery planning.

Seamless Solution

The Channel Gateway presents HP storage systems as standard mainframe tape devices. The solution is truly application transparent, requiring no changes to your existing tape applications.

To further simplify the transition, Luminex's tape migration tools and professional services are available to migrate your current physical and/or virtual tape volumes to the new solution, while retaining the original volsers.

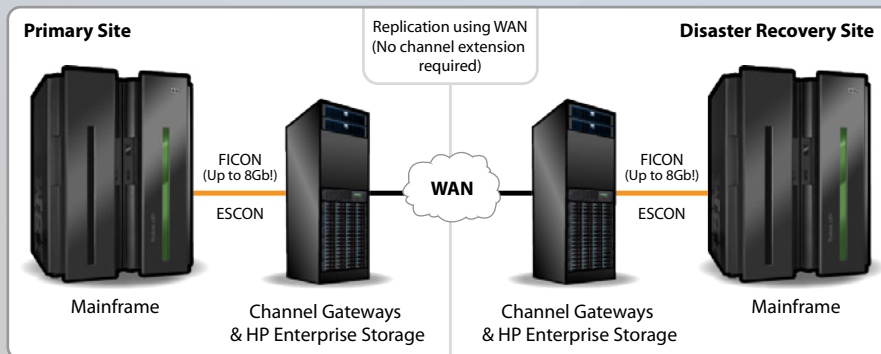
Performance and Scalability

Up to 8Gb/s, high speed FICON connectivity is combined with high performance, enterprise storage from HP to improve read and write times for all mainframe tape operations.

The solution provides unmatched scalability that grows with your needs. It is simple and non-disruptive to add more Channel Gateways to increase your throughput or add more HP storage to increase your capacity.

Improve Backup and Disaster Recovery

Channel Gateways eliminate the cost, risks and limits of physical tape. With the solution's Remote Replication feature, virtual tape data is quickly replicated to remote disaster recovery sites for faster and more convenient disaster recovery testing, vastly improving disaster recovery plans and preparedness. No more lost or damaged tapes and no more waiting for tapes to ship. And because backup windows are dramatically shortened, more frequent full volume backups become practical.



Mainframe Storage World



Solution Benefits

- Tape volumes immediately available both locally & at DR site
- Recovery at DR site is immediate – no waiting for physical tape retrieval
- Enhanced data security with replication over secure IP networks
- Significant operational expense savings and Eco-friendly:
 - Eliminates cost of storing, handling, transporting & managing tapes
 - Eliminates recurring maintenance costs of tape libraries & drives
 - Eliminates procurement of tape media
 - Significant reduction in datacenter floor space
 - Significant reduction in electrical usage and HVAC
- Reduced operational overhead

Mainframe Storage World



"After implementing the Luminex/HP solution for Mainframe Virtual Tape, we successfully completed multiple disaster recovery tests, with greater ease and simplicity. We have completely eliminated physical tape use and its associated costs. Our full volume backups are so much faster that we have eliminated the need for incrementals."

IT Manager,
Government Financial Agency

About Luminex

Luminex is a leading developer and provider of disk-based mainframe virtual tape products and technologies. Luminex Channel Gateways allow mainframe enterprise users around the world to take full advantage of the benefits of Modern Mainframe Virtual Tape to eliminate or reduce physical tape, improve RTO and RPO, lower capital and operating costs and improve data security. With the Luminex Channel Gateways, enterprises can now have a single backup and recovery program for their mainframe and open systems data.

Luminex Software, Inc.
871 Marlborough Avenue
Riverside, CA 92507

1.888.LUMINEX
1.951.781.4100
www.luminex.com

© 2011 Luminex Software, Inc. Channel Gateway, CGX and Mainframe Storage World are trademarks of Luminex Software, Inc. All other company or product names are trademarks of their respective owners. 110915

Channel Gateway solutions have been chosen by mainframe data centers of all sizes and industries

With reliable, high performance virtual tape, mainframe data center planners are:

- Re-thinking and re-tooling tape backup and DR strategies
- eliminating costly and cumbersome physical tape
- realizing greater performance and better SLA's

The MODERN Advantage

Channel Gateway Modern Mainframe Virtual Tape solutions remove the limitations and liabilities of physical tape and offer the scalability, compatibility and performance that data centers demand:

- Throughput and capacity are scalable from the entry-level to high-end mainframe environments
- zOS, VM, VSE and OS390 operating systems are supported
- All major tape applications and tape management systems are supported
- For HSM, reclaim CPU cycles by skipping ML1, migrate directly from MLO to ML2
- Supports 4096 devices per FICON channel
- All tape volumes are stored and secured by RAID data protection
- Luminex tape migration tools and services are available
- Luminex Tape Monitoring and Allocation Control System Software (TMACS) is available for complex device allocation and steering
- Solutions are backed by our Worldwide 7X24 Customer Support

Are you ready to rethink?

Tapeless backup – Backups are stored on local, highly available disk.

Network-based backups and replication - Remote network-based backup and replication is practical and cost effective.

RTO – Online disk-based storage dramatically improves Recovery Time Objectives.

RPO – Recovery Point Objectives are far superior with backups remotely replicated in parallel and within minutes.

Enterprise quality – Installed and in-use at major and mission critical data centers.

Channel Gateway at a Glance

The Channel Gateway enables mainframe customers to channel attach industry leading and proven enterprise storage solutions. The Channel Gateway supports both FICON and ESCON channel connectivity and existing mainframe backup software simply sees the Channel Gateway as a recognized mainframe tape device. No software changes are required.